

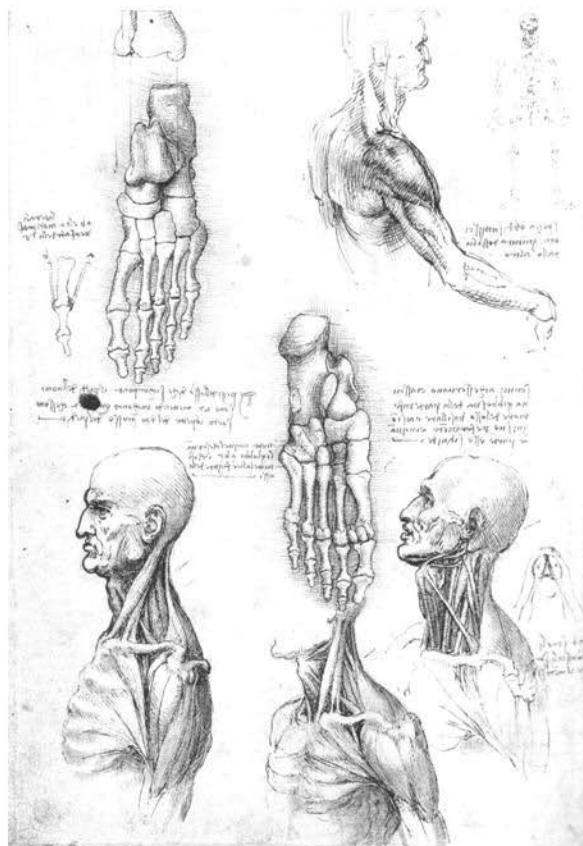
## What About Side Effects?

Most commonly patients experience soreness and stiffness at the site of injection for several days. This is an appropriate response and will resolve. Other more common side effects include bleeding, bruising and swelling in the area of injection. Some people may have a sensitivity, in the form of headache, nausea and tiredness, to the proliferative agent and/or the anesthetic. This reaction is rare and temporary and it does not last longer than two to four days after the injection. Other more serious but rare side effects include infection, puncture of the lung, nerve and tissue injury.

## Why haven't I heard about Prolotherapy from my Doctor?

This style of treatment is not taught in medical schools; though it is taught in post-graduate courses. Moreover, most doctors are too busy in their own private practices to spend the time necessary to take this specialized training. On top of that an overwhelming percentage practicing physicians in this country are not aware of this treatment method because the substances used are not patented, and therefore the pharmaceutical companies are not interested in marketing it to doctors.

For more information on how prolotherapy has been effective for particular conditions, go to <http://prolotherapy.com/prolohelp.htm>

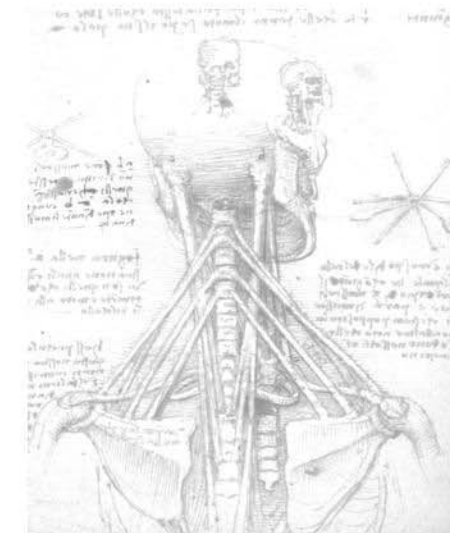


4801 Wisconsin Ave NW  
Washington DC 20016 Phone: 202-244-6661  
Fax: 202-244-1340  
E-mail: [info@restorativehealth.org](mailto:info@restorativehealth.org)  
Website: [www.restorativehealth.org](http://www.restorativehealth.org)



**RESTORATIVE HEALTH**  
CENTER FOR INTEGRATIVE MEDICINE

## Is Prolotherapy for Me?



A Brief Explanation for  
Patients Of a Surgical  
Alternative that can  
Help with Chronic Pain.

Tel: 202-244-6661